



# COPPER COAST PROJECT

## TECHNICAL OVERVIEW OCTOBER 2020



Suite 4, Level 5  
85 South Perth Esplanade  
South Perth WA 6151

PO Box 496  
South Perth WA 6951  
Western Australia

T. +61 8 9238 8300  
F. +61 8 9238 8399  
E. [contact@igo.com.au](mailto:contact@igo.com.au)

[igo.com.au](http://igo.com.au)  
IGO Limited  
ABN 46 092 786 304

## INTRODUCTION

To align with IGO's strategic focus on clean energy metals IGO prioritises the exploration of terranes prospective for magmatic nickel sulphide and sediment hosted copper deposits.

The Company has acquired exploration access to extensive belt-scale land positions across Australia and in Greenland, and all are highly prospective for multiple Tier-1 base and precious metals discoveries (Figure 1).

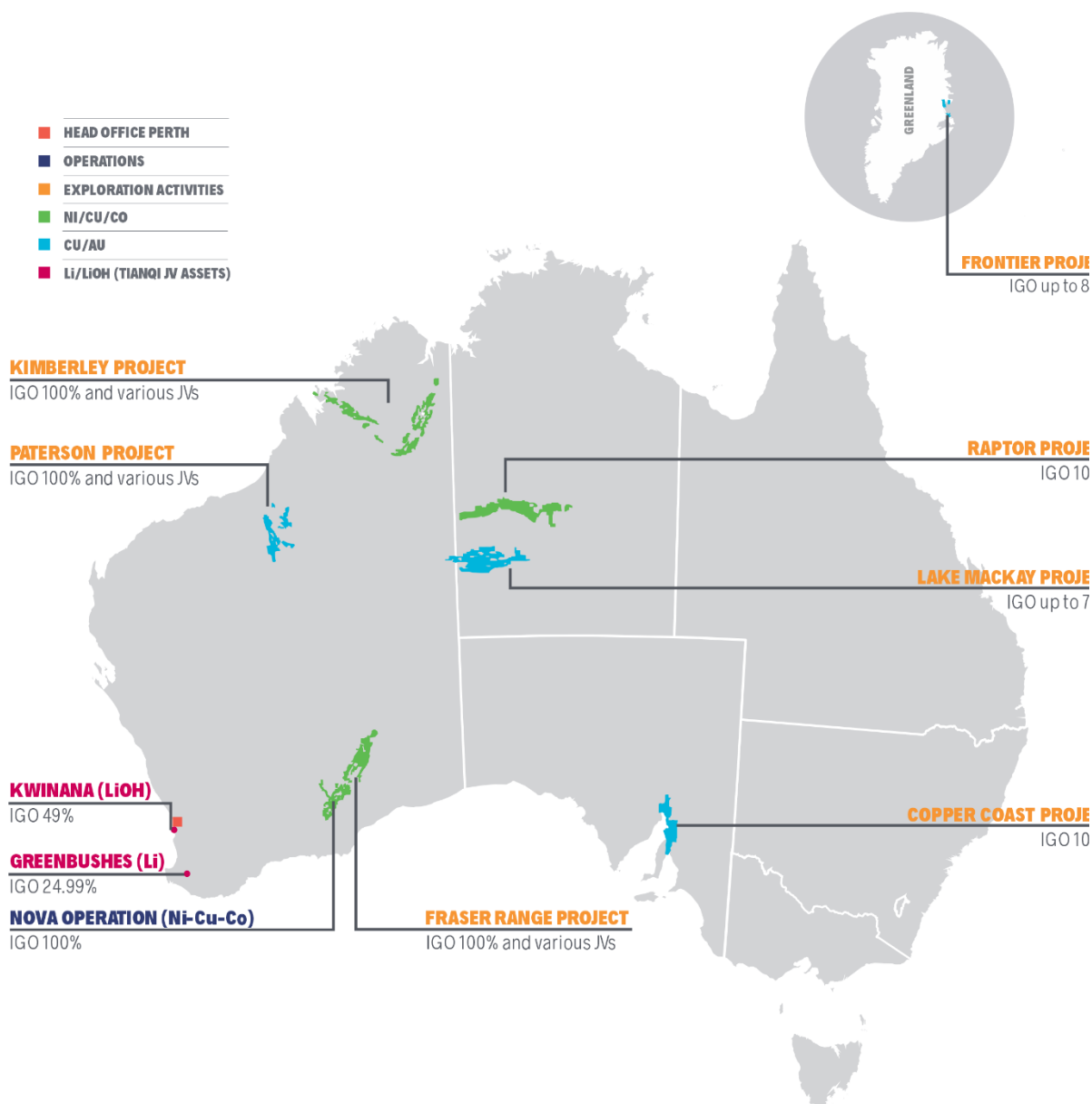


Figure 1 – Location Map of IGO's Belt-scale Exploration Projects and Operations



## TECHNICAL OVERVIEW

The Copper Coast Project is located along the eastern margin of the Gawler Craton in South Australia. West of the Torrens Hinge Zone (THZ), crystalline Paleoproterozoic and Mesoproterozoic basement rocks are known to host IOCG-type mineralisation like Olympic Dam, while to the east the Neoproterozoic sediments of the Adelaide Geosyncline (or 'Rift') are prospective for sediment-hosted copper deposits. The Copper Coast Project is a conceptual, model-driven target area that IGO has secured via open staking on a 100% basis. IGO considers the Copper Coast Project represents a significant belt-scale opportunity to find and develop a Tier-1 sediment-hosted copper deposit, similar to the giant Kamoakakula deposit on the margin of the Central African Copperbelt (CACB), which is currently being developed by Ivanhoe Mines.

The Copper Coast Project comprises six granted Exploration Licences (EL 6307 through 6312) covering 4,809km<sup>2</sup> and five (soon to be granted) Exploration Licence Applications (ELA's 2020-66 through 2020-68, ELA 2020-74 and ELA 2020-75) covering 3,456km<sup>2</sup>.

A review of wide-spaced historical drill holes, most dating back to the 1970's, has confirmed permissive and prospective stratigraphy that hosts copper mineralisation like that of the CACB. IGO has completed multiple on-ground geophysical surveys on the granted tenements to advance the geological understanding of the project area (Figure 2). Each of these surveys has delivered positive results that support the proposed model, with follow-up exploration planned that will use more advanced exploration techniques (including drilling).

A nominally 1km-spaced, roadside ground gravity survey has confirmed the type of structural and hydrological architecture that is seen in other sediment-hosted copper basins, such as the CACB. The results of a regional magneto-telluric (MT) geophysical survey, which was cut short by the COVID-19 pandemic, appears to corroborate the new gravity data, but additional work is required to validate the results. Several historic drill holes have recently been selected and submitted for HyLogger spectral scanning to identify and map any alteration that may be related to ore-forming processes. A three-hole stratigraphic diamond drilling program is planned for execution during Q3FY21 to test and validate the geophysical work completed to date. Positive results from the 2021 drilling program will progress the project to a further round of target generation and drill testing.

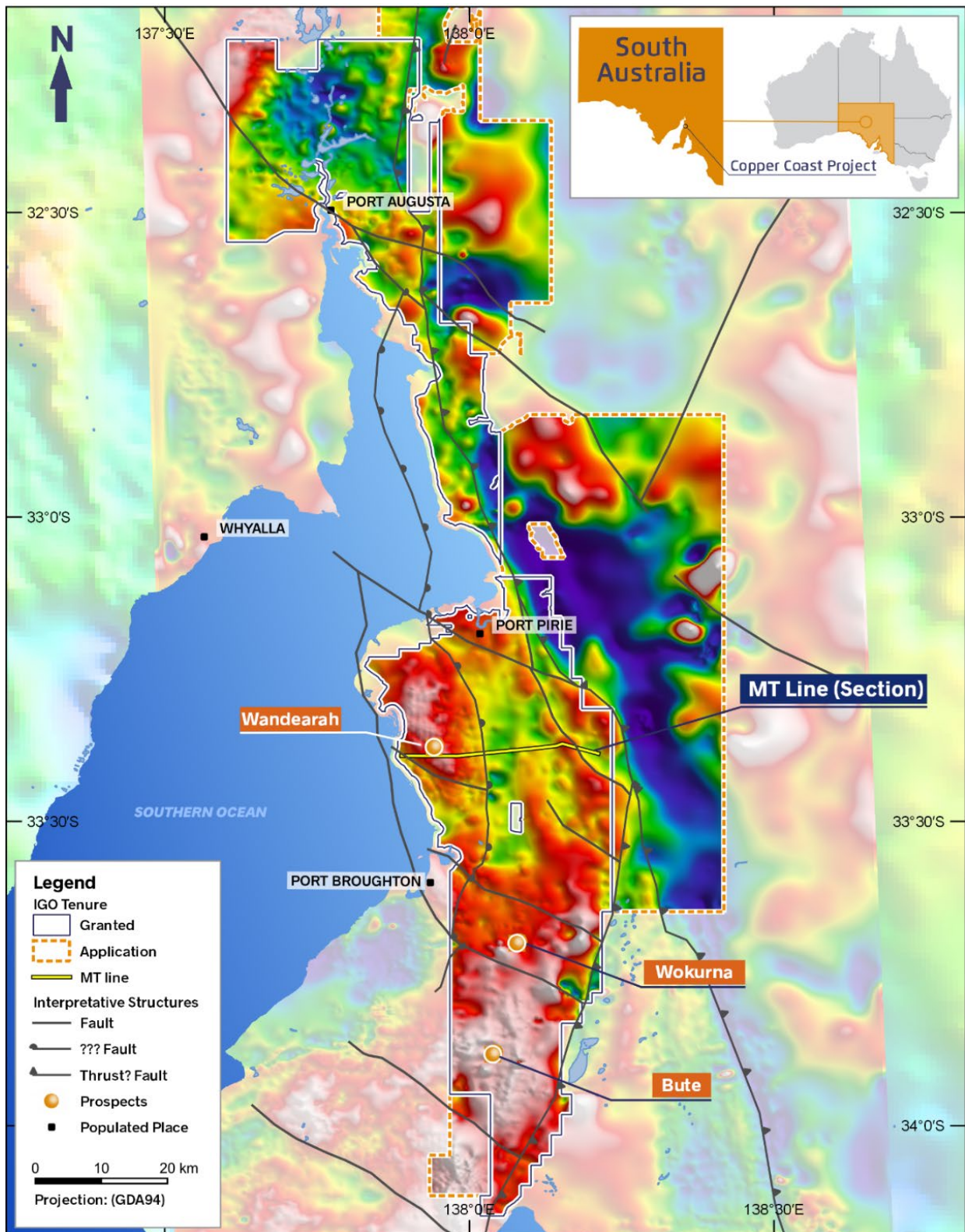


Figure 2 - Copper Coast Project showing drilling prospects plotted on a map of the basin-margin structural architecture interpretation, which is draped over the Bouguer gravity intensity image



## **CAUTIONARY STATEMENTS & DISCLAIMER**

This document has been prepared by IGO Limited ("IGO") (ABN 46 092 786 304). It should not be considered as an offer or invitation to subscribe for or purchase any securities in IGO or as an inducement to make an offer or invitation with respect to those securities in any jurisdiction.

This document contains general summary information about IGO. The information, opinions or conclusions expressed in this document should be read in conjunction with IGO's other periodic and continuous disclosure announcements lodged with the ASX, which are available on the IGO website. No representation or warranty, express or implied, is made in relation to the fairness, accuracy or completeness of the information, opinions and conclusions expressed in this presentation.



This document includes forward looking information regarding future events, conditions, circumstances and the future financial performance of IGO. Often, but not always, forward looking statements can be identified by the use of forward looking words such as "may", "will", "expect", "intend", "plan", "estimate", "anticipate", "continue" and "guidance", or other similar words and may include statements regarding plans, strategies and objectives of management, anticipated production or construction commencement dates and expected costs or production outputs. Such forecasts, projections and information are not a guarantee of future performance and involve unknown risks and uncertainties, many of which are beyond IGO's control, which may cause actual results and developments to differ materially from those expressed or implied. Further details of these risks are set out below. All references to future production and production guidance made in relation to IGO are subject to the completion of all necessary feasibility studies, permit applications and approvals, construction, financing arrangements and access to the necessary infrastructure. Where such a reference is made, it should be read subject to this paragraph and in conjunction with further information about the Mineral Resources and Ore Reserves, as well as any Competent Persons' Statements included in periodic and continuous disclosure announcements lodged with the ASX. Forward looking statements in this presentation only apply at the date of issue. Subject to any continuing obligations under applicable law or any relevant stock exchange listing rules, in providing this information IGO does not undertake any obligation to publicly update or revise any of the forward looking statements or to advise of any change in events, conditions or circumstances on which any such statement is based.